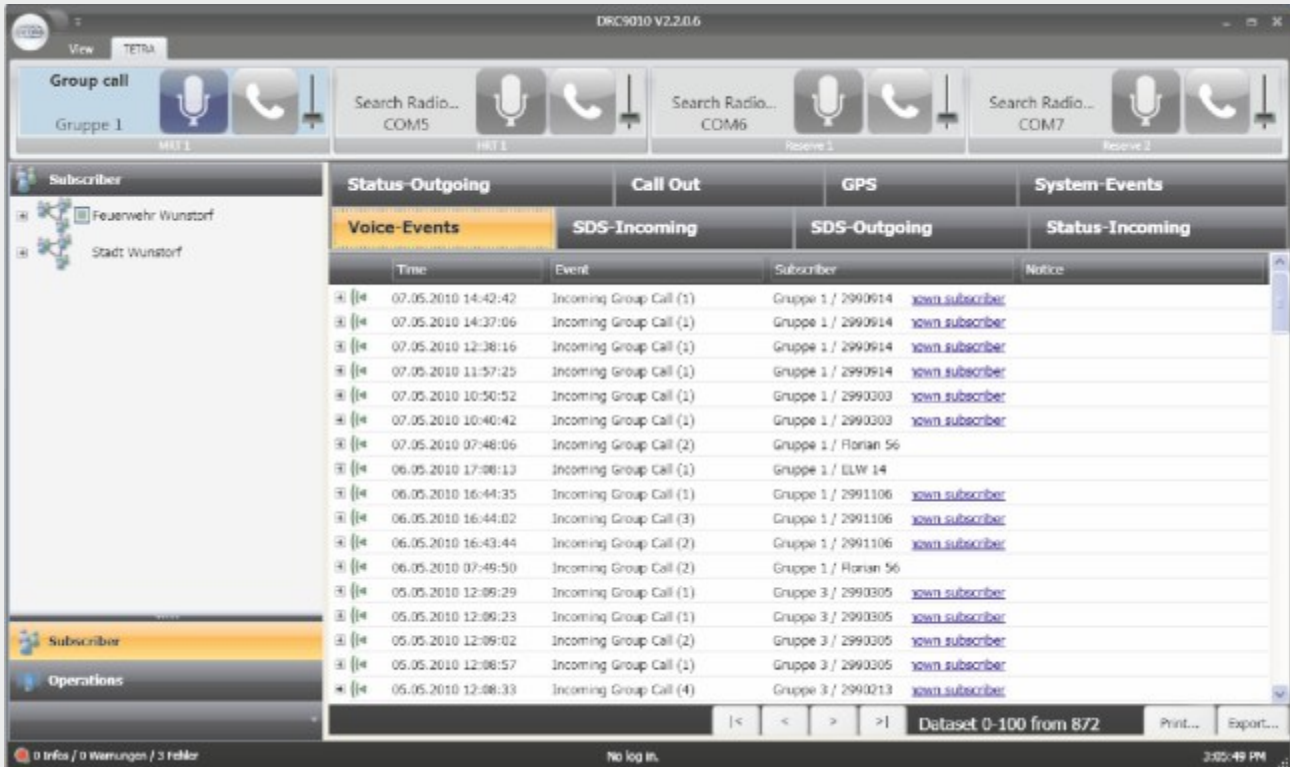


DRC9010

DigitalRadioConsole Control Console
TETRA



Application

The DRC9010 PC control console for TETRA radio devices is an infrastructure-independent workstation for TETRA networks, providing diverse functions for control of single devices and fleets. From this workstation upto four radio devices may be controlled. The DCR9010 governs speech events, SDS-messages (Short Data Service) and status messages for individual subscribers or groups. Customization to special performance requirements available upon request.

Via the list of participants the dispatcher obtains the actual group constitution and their status information. By means of the list the dispatcher is able to directly address to the subscribers and groups.

Features

- Control of several central office radio devices
- Administration of single and group calls
- List for administration of organizations, groups and individual subscribers (status screen)
- Dispatch and receipt of text messages
- Dispatcher functions with status indication
- Emergency call functionalities
- Status indication with colour change and text (TETRA)
- Chronological lists regarding speech events, status messages and SDS
- Optional extras:
 - AVL/GIS system for map display
 - CallOut administration
 - TETRA remote function



ATS Elektronik GmbH · Albert-Einstein-Str. 3 · 31515 Wunstorf · Germany
Telefon: +49 (0) 50 31 / 95 48 – 0 · E-Mail: info@ATSONline.de · www.ATSONline.de

All technical data and functions serve as orientation and may be modified without previous notice.